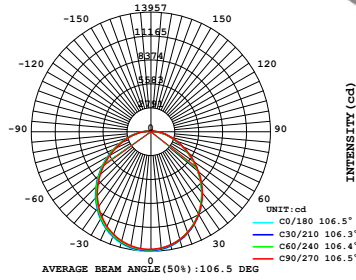


PRODUCT DESCRIPTION

When it comes to lighting a large area, this product is the ideal solution for high impact lighting of mine-haul road intersections road works, construction sites, events and general industrial land maintenance programs.

SPECIFICATIONS/FEATURES

- » Input Voltage: AC 100-277V OR DC 24V
- » Type of installation: Portable
- » Colour handle: Black
- » Power supply cable: SJTW 18AWG*3C / 5M(16.40ft)
- » Lamp cover : opal
- » Lifespan>50000hours
- » Type of protection: IP65
- » Impact protection: IK08 (5 Joule)
- » 5years limited warranty
- » Beam Angle:100 Deg



130Lm/W



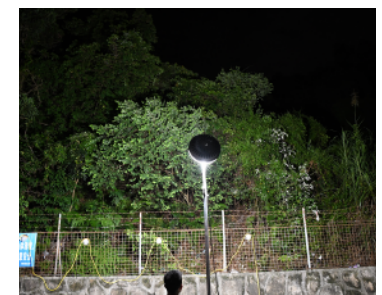
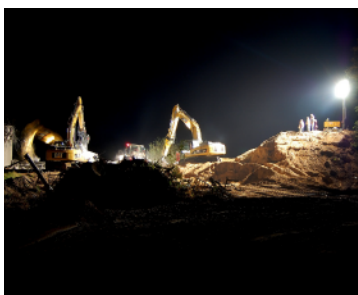
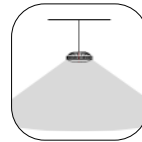
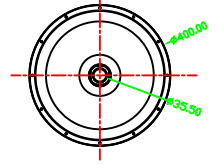
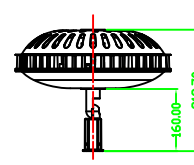
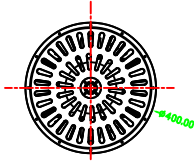
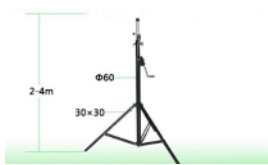
SJTW 18AWG*3C / 5M(16.40ft)



-40°F to 122°F (-40°C to +50°C)

ACCESSORY

Tripod Bracket 4M		High H 4M Weight 13.6Kg(30.7lbs)
-------------------	--	-------------------------------------



TECHNICAL SPECIFICATIONS

Model No.	Wattage (W) +/- 10%	AC Input	Lumens +/- 5%	CCT	PF	Dimensions H*D	Certificate
YL-MD300-M-XXK	300	100~277V ac 50/60Hz	39000	2700-6500K	≥0.9	400*313 (mm) 15.75" x12.32"	ETL

* Kelvin Temperatures may vary +/- 250K.

* Line length of Please inquire. Extending the power cord may increase the size of the package

PACKING

Model No.	NET Weight	Carton Size
YL-MD300-M-XXK	7.8kg / 17.16lbs	1PCS: 455*455*285mm / 17.9"*17.9"*11.2" 2PCS: 480*480*595mm / 18.9"*18.9"*23.4"
Tripod Bracket 4M	13.6kg / 30.70lbs	1PCS: 230*230*2000mm / 9.06"*9.06"*78.74"
Tripod Bracket 2M	7.00kg / 15.43lbs	1PCS: 220*220*990mm / 8.66"*8.66"*38.98" 2PCS: 230*430*1000mm / 9.06"*16.93"*39.37"